

The Work of the Edinburgh Mathematical Society

Rachel Norman

Professor of Food Security and Sustainability and Dean for
Research Engagement and Performance, University of Stirling
President- elect, Edinburgh Mathematical Society

Purpose

- Membership currently around 700
- **Stated aim:** *“...the development and promotion of all aspects of the mathematical sciences - including pure and applied mathematics, statistics, operational research, and data science - particularly in Scotland.”*
- Smallest of 5 UK mathematical sciences learned societies (LMS, IMA, RSS, ORS, EMS). Partner in the Council for Mathematical Sciences.

Joining EMS - How and Why?

- Membership free to PGR students
- For others, 1st year free, thereafter £24 p.a.
- Notification and access for online talks
- Travel expenses for PGR students to attend EMS meetings in Scotland

Contact: ems.membership@ed.ac.uk (Oana Pocovnicu, Membership Secretary)

Activities: Meetings of the Society

- Monthly meetings Oct – May, organised by university departments - currently online talks

Coming up.....

- **1st October** *EMS Popular Lecture*, **Dr Henry Segerman** (Oklahoma State University) *Artistic mathematics: truth and beauty* Register at smartsurvey.co.uk/s/POPULAR/ by TOMORROW
- **22 October** *AGM*, **Professor Gavin Gibson** (Heriot Watt), *Presidential Address*.

Popular lecture of the
Edinburgh Mathematical Society

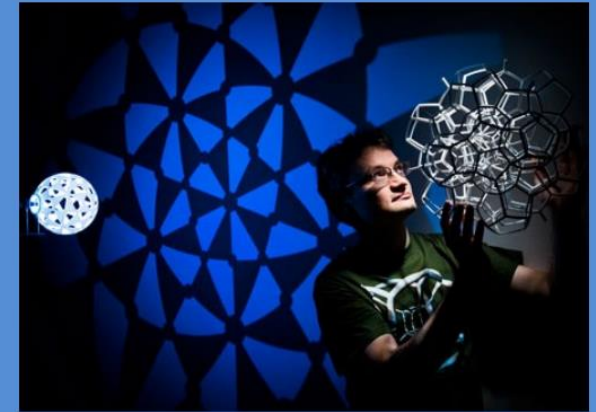


Photo by James Glossop

Dr Henry Segerman

Associate Professor at
Oklahoma State University, USA

Artistic mathematics: truth and beauty

Activities: Research Support Fund

- Established in 1983 as 'Centenary Fund'
- Supports a range of research activities including visitors, workshops, summer schools
- Co-sponsorship of major meetings (BMC/BAMC)
- Straightforward application procedure
- Non-members may apply if application countersigned by member

Activities: Prizes & Awards

- Sir Edmund Whittaker Memorial Prize - to an outstanding early-career mathematician having a specified connection with Scotland
- EMS PhD Prize (initiated in 2019) - for an outstanding PhD thesis in pure mathematics, applied mathematics, mathematical physics or statistics.
- From 2021, EMS Impact Prize, to awarded to individuals or teams whose work in mathematical sciences has impacted on or had influence in other fields [**reflects increasing value placed on impact e.g. through REF, Bond Review**]

Other activities



- Annual PGR Meeting at The Burn, Edzell
- Public engagement. EMS participates in annual Science and the Parliament in November, presenting prizes to best performing students in Higher and Advanced Higher Mathematics
- Members of SG's Cross Party Working Group on Science & Technology